

Human GFRAL Protein; His Tag

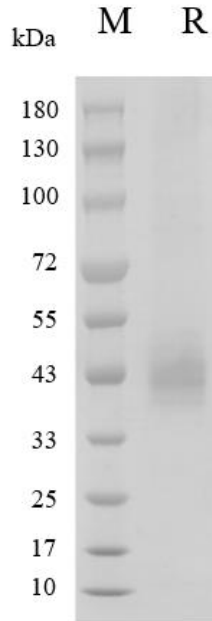
Product Information

Product Name	Human GFRAL Protein; His Tag
Storage temp.	Store at $\leq -70^{\circ}\text{C}$, stable for 6 months after receipt. Recommend to aliquot the protein into smaller quantities for optimal storage. Please minimize freeze-thaw cycles.
Catalog# / Size	GM-87631RP-100 / 100 μg GM-87631RP-1000 / 1 mg

Protein Information

Alternative Names	GFR alpha like,GFR alpha-like,GFRAL,GRAL
Source	Human GFRAL Protein; His Tag (GM-87631RP) is expressed from human 293 cells (HEK-293). It contains AA Ser19 - Glu351 (Accession # Q6UXV0-1). This protein carries a His tag at the C-terminus.
Purity	> 95% as determined by SDS-PAGE
Endotoxin	< 1 EU/ μg , determined by LAL gel clotting assay
Predicted Mol Mass	37.3 KDa
Formulation	Supplied as a 0.2 μm filtered solution of PBS, pH7.4.
Description	GFR alpha like is a protein associated with the Glial Cell Line-Derived Neurotrophic Factor Receptor (GFR). It is a cell surface receptor closely linked to the binding and signal transduction of the GDNF family of neurotrophic factors (GDNF, NRTN, ARTN, and PSPN). The GFR alpha like protein plays a crucial role in the development and maintenance of the nervous system, regulating processes such as neuronal survival, differentiation, migration, and synapse formation. Research indicates that the expression of GFR alpha like protein in the nervous system is associated with various neurological diseases and disease models, potentially playing a role in the pathogenesis of neurodegenerative diseases. Further research into the function and regulatory mechanisms of GFR alpha like protein can help deepen our understanding of the occurrence and development of neurological diseases, providing new targets and strategies for the treatment of related diseases.

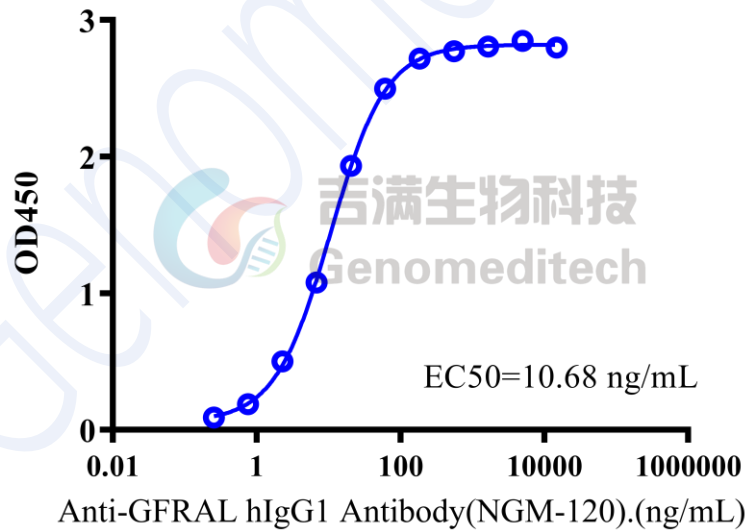
SDS-PAGE



On SDS-PAGE under reducing (R) condition. The gel was stained overnight with Coomassie Blue. The purity of the protein is greater than 95%.

Bioactivity-ELISA

Human GFRAL Protein; His Tag, ELISA 0.5 µg Human GFRAL Protein; His Tag of per well



Human GFRAL Protein; His Tag (Catalog # GM-87631RP) was immobilized at 5 µg/ml (100 µL/well).
 Increasing concentrations of Anti-GFRAL hIgG1 Antibody (NGM-120) (Catalog # GM-77399AB) were added.